

HDMI & USB Keyboard Mouse CAT5 Extender

ITEM NO: HKM01E HDMI & USB Keyboard Mouse CAT5e Extender



The HKM01E is design to extend full HDMI & USB keyboard mouse over one CAT5e/6 up to 150 meters. Transmitter built in local HDMI monitor output for local monitor and provides superior video quality up to 1920 x 1200 resolutions. With 2 USB port to extend keyboard and mouse signal over same CAT5e/6 cable. It is optimized for applications at security monitoring and multimedia display and digital signage, home network integration, and industrial control, hospital, education.

Features:

- Extend HDMI and USB keyboard mouse signals over one CAT5e/CAT6 cable.
- **Supports resolutions full HD up to 1920x1080p@60hz.**
- **Transmission range up to 150M over CAT5e, 160M over CAT6.**
- **HKM01ET transmitter built in HDMI loop output.**
- HKM01ER receiver unit with 2 ports USB devices to extend USB keyboard and mouse.
- Perfect for control remote machines and security monitoring systems, digital signage application.
- **Option model: SR01 signal repeater for longer distance application.**

Installation View:



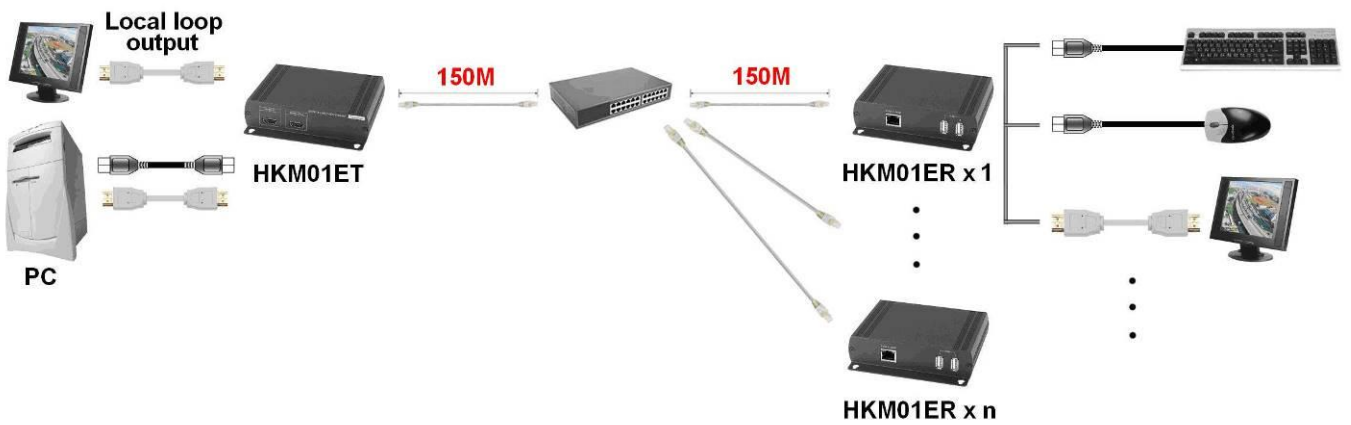
Optional Model: SR01 Signal Repeater (order separately)

- Extend data signal for an additional 120meters.
- Application for HKM01E signals for extra long range transmission.
- Ability to cascade connection with multiple SR01 for long range transmission
- Built in LED status indication.
- External power required.
- Plug and play for easy installation.

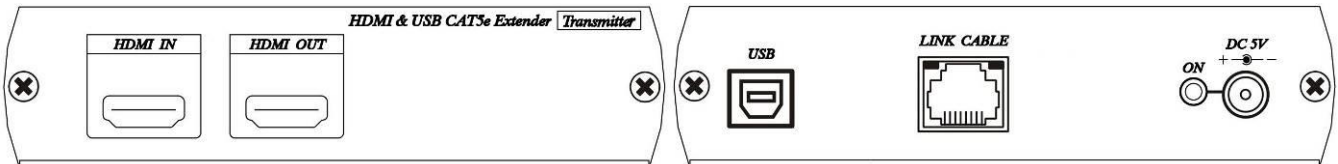
Work with HKM01E CAT5 Extender:



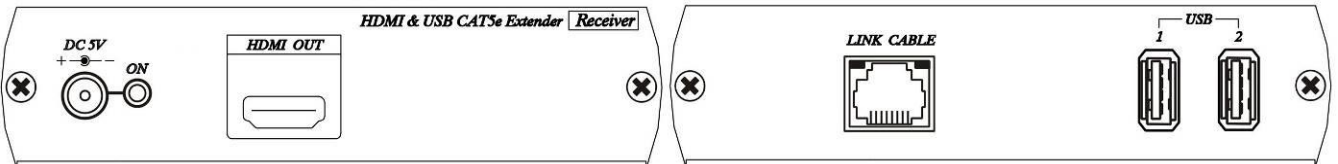
HDMI over IP Solution: support point to many connections via network switch:



**Panel View:
HKM01ET**



HKM01ER



LED Indication Status:

Front Panel Green LED:
Power on/off

RJ45 LED:
Orange Flash: Data transmission
Green On: Linking

RJ45 Define:

Link Cable (TIA/EIA-568-B)

- | | |
|-----------------|----------|
| 1. Orange-white | Data 1 + |
| 2. Orange | Data 1 - |
| 3. Green-white | Data 2 + |
| 4. Blue | Data 3 + |
| 5. Blue-white | Data 3 - |
| 6. Green | Data 2 - |
| 7. Brown-white | Data 4 + |
| 8. Brown | Data 4 - |

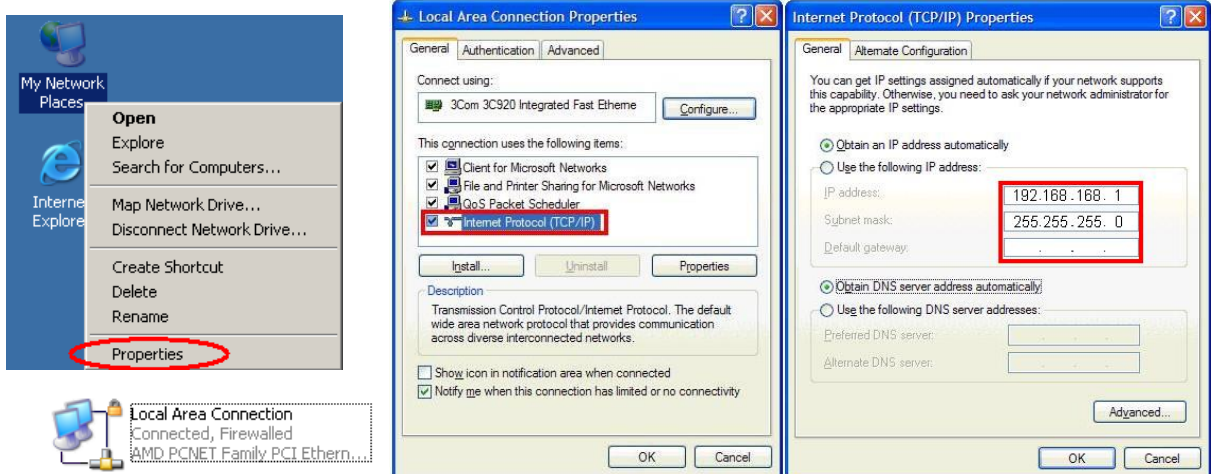
Computer IP Address Setting:

System default IP address is 192.168.168.55 for HKM01ET, 192.168.168.56 for HKM01ER (subnet mask 255.255.255.0), Your computer must set in same subnet mask to enter the web setup page.

To change the IP address of computer please follow below step: (based on Windows XP):

Right click on "My Network Place" → "Properties" then right click on "Local Area Connection" → "Properties" then double click on "Internet Protocol (TCP/IP)" to setting as below:

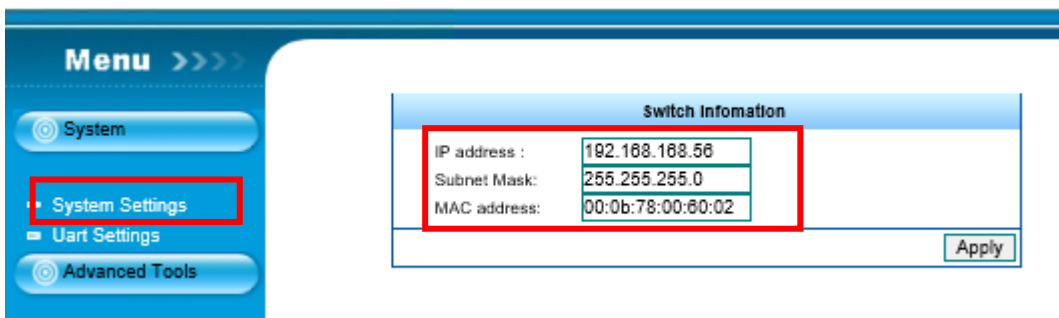
(IP address 192.168.168.1, sub mask 255.255.255.0)



Login in to the web:

Use CAT5e cable to connect transmitter/receiver RJ45 port to PC LAN port, enter the IP address of TX/RX in the web browser.

After login to the web, click System Settings you can change IP address, Subnet Mask, MAC address at System page, then click Apply to finish setting.



Cable:

Video Link cable using high quality CAT5e UTP/STP/FTP or CAT6 UTP cable.

Caution:

1. This device not support wireless and gaming keyboard mouse.
2. The cabling must away from any equipment with electromagnetic wave, i.e.: microwave, radio equipment, high voltage.

Package Include:

HKM01ET Transmitter x 1
HKM01ER Receiver x 1
USB A to B cable x 1
DC 5V 2Amp power adapter x 2

Specification:

ITEM NO.	HKM01ET	HKM01ER
Support Resolution	640x480@60Hz, 800x600@60 Hz, 1024x768@60 Hz, 720x480p@60 Hz, 720x576p@50 Hz, 1280x720p@60 Hz, 1280x720p@50 Hz, 1920x1080i@60 Hz, 1920x1080i@50 Hz, 1920x1080p@60Hz	
Transmission Distance	CAT.5e/6 : 120M (Max)	
HDMI Connector	HDMI Type A x 2	HDMI Type A x 1
USB Connector	USB Type B x 1	USB Type A x 2
Link Connector	RJ45 x 1	
Power Supply	DC 5V 2A	
Power Consumption	1.2Amp (Max.)	0.8Amp (Max.)
Temperature	Operation: 0 to 55°C, Storage: -20 TO 85°C, Humidity: up to 95%	
Dimensions mm	125 x 125 x 30	125 x 125 x 30
Weight g	355	350



Rev.A